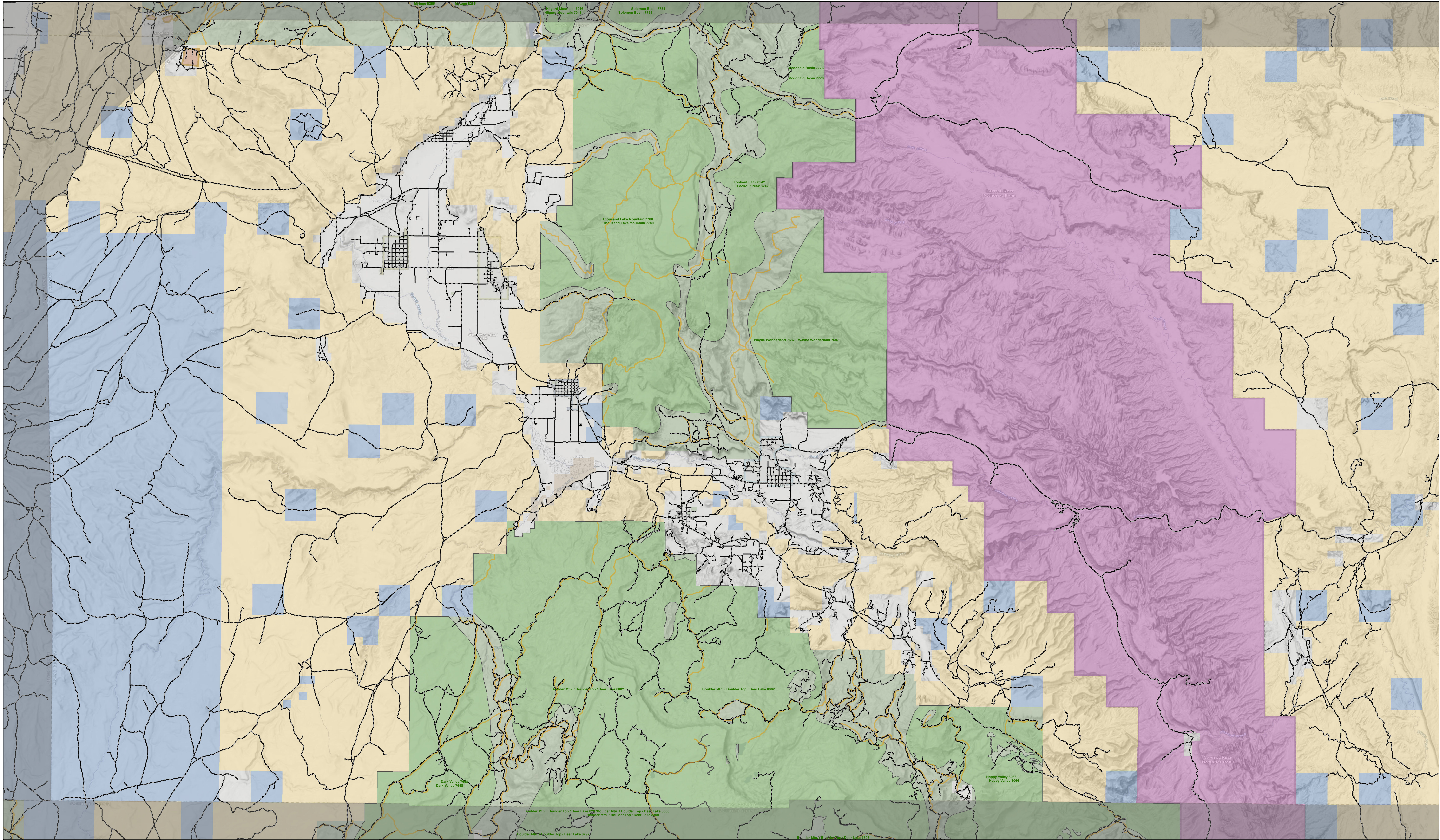


Wayne County - Inventoried Roadless Areas



Legend

| | | |
|---------------------------|--------------------------|----------------------|
| Current 2018 Roads - AGRC | National Monument | SITLA |
| 1995 Utah Roads in USFS | National Park | State Sovereign Land |
| Roadsless Boundary | US Forest Service | State Parks |
| Inventoried Roadless Area | Wilderness | Wildlife Reserve |
| Wildlife Urban Interface | National Wildlife Refuge | Other State |
| BLM | Military | Tribal Lands |
| National Recreation Area | Private | |

